



M-Energy Panel Installation Manual

June 2019

Installation and designing information on M-Energy Panel



M-SIPs has deep roots in the innovative design culture of Scandinavia, is now introducing International and American Certified SIPs materials to the American construction market. We're bringing innovative advancements and superior products – products that eliminate the limitations of current materials such as expansion and contraction, rotting, warping and fire hazards. Multi-Panels' full product range includes SIPs,- Energy Panels (Patent Pending process) Fiber Cement Siding, Mgo structural sheathing (non chloride) and XPS shower and tile backer. Our advanced certified concepts and products mix save both time and money by being a true single-material replacement for the two, three and sometimes five layers used in current material practices. These products are the result of years of research, development and certification some in a Patent Pending Processes. They have produced an exceptional track record of quality and efficiency – and provide remarkable labor-saving solutions. With superior-performance products, we are often asked why Multi-Panels is not more expensive than our competitors. The answer is simple: We maintain an innovative mindset not only with our product mix but also with the way we bring those products to market. In short, we have a streamlined value chain with lower overhead... and we pass the resulting savings directly to our clients. Contact us with any questions you may have ...

Our product range has been through intensive long term testing and are certified and tested towards both European, North America and Canadian building regulations:



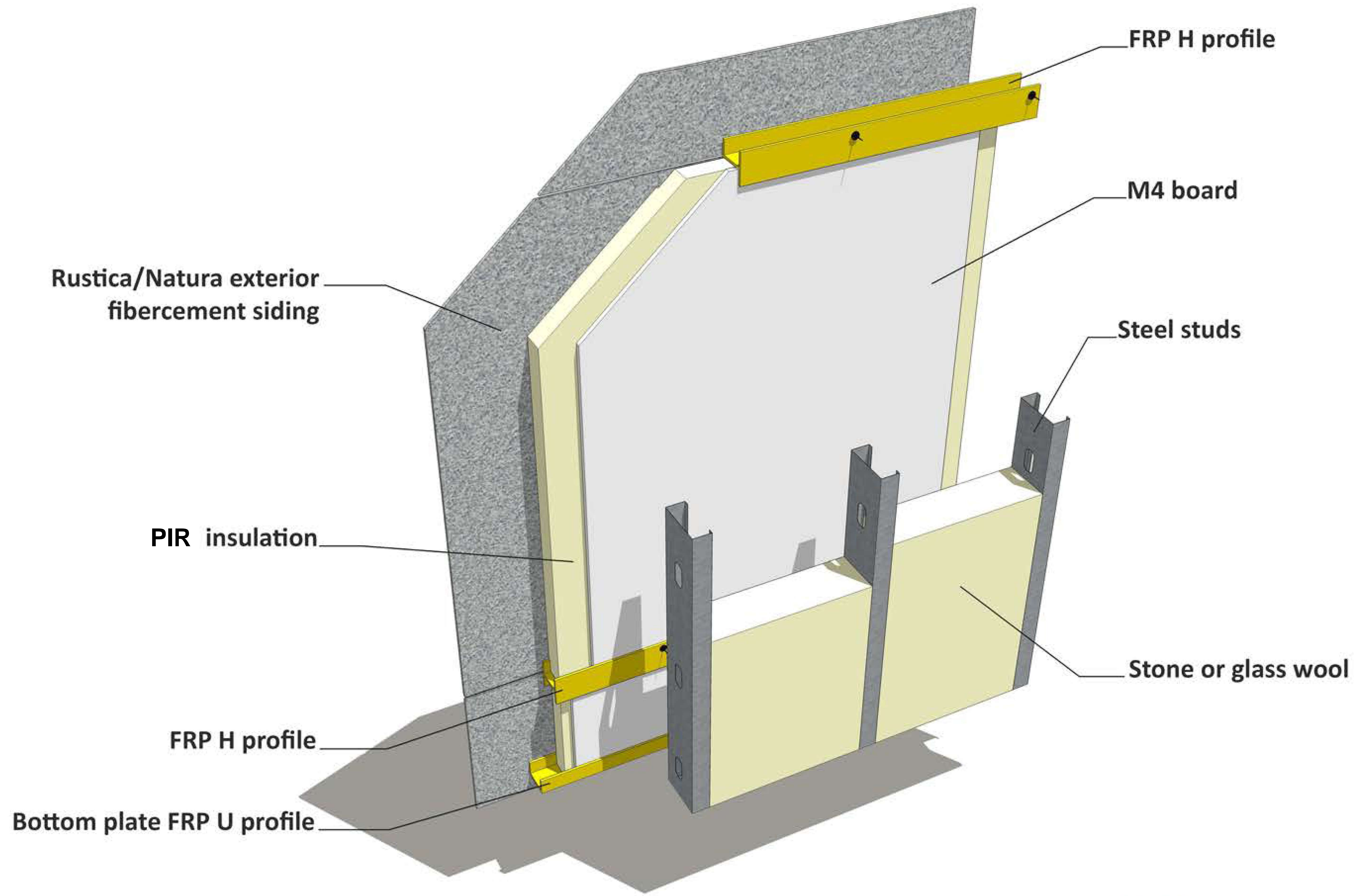
CAN/ULC

www.m-sips.com



Guidelines for Installation

- Secure project apply to local building code. Engineered details take precedence over M-SIPs details.
- Preconstruction meeting with your installation crew.
- Inventory materials when you receive according project and order confirmation.
- Check all M-Energy sizes and compare to project drawings before installation.
- Details regarding mastic need to be followed and fill all voids with expanding foam to avoid cold bridging.
- Make sure your horizontal FRP H profile is level and straight.
- Fabricate and pre-install the sliding spline material as specified.
- Do not lift up the M-Energy Panel by the edge of the top skin use, use vacuum lift system as for glass.
- Remove any debris from the FRP profile before you place the M-Energy Panel on it.
- Make sure that the inside M4 facing skin are bearing on the FRP H profile.
- Follow proper screwing requirements and for thermal expansion according to details and job specific engineering.



FRP H profile

M4 board

Steel studs

Stone or glass wool

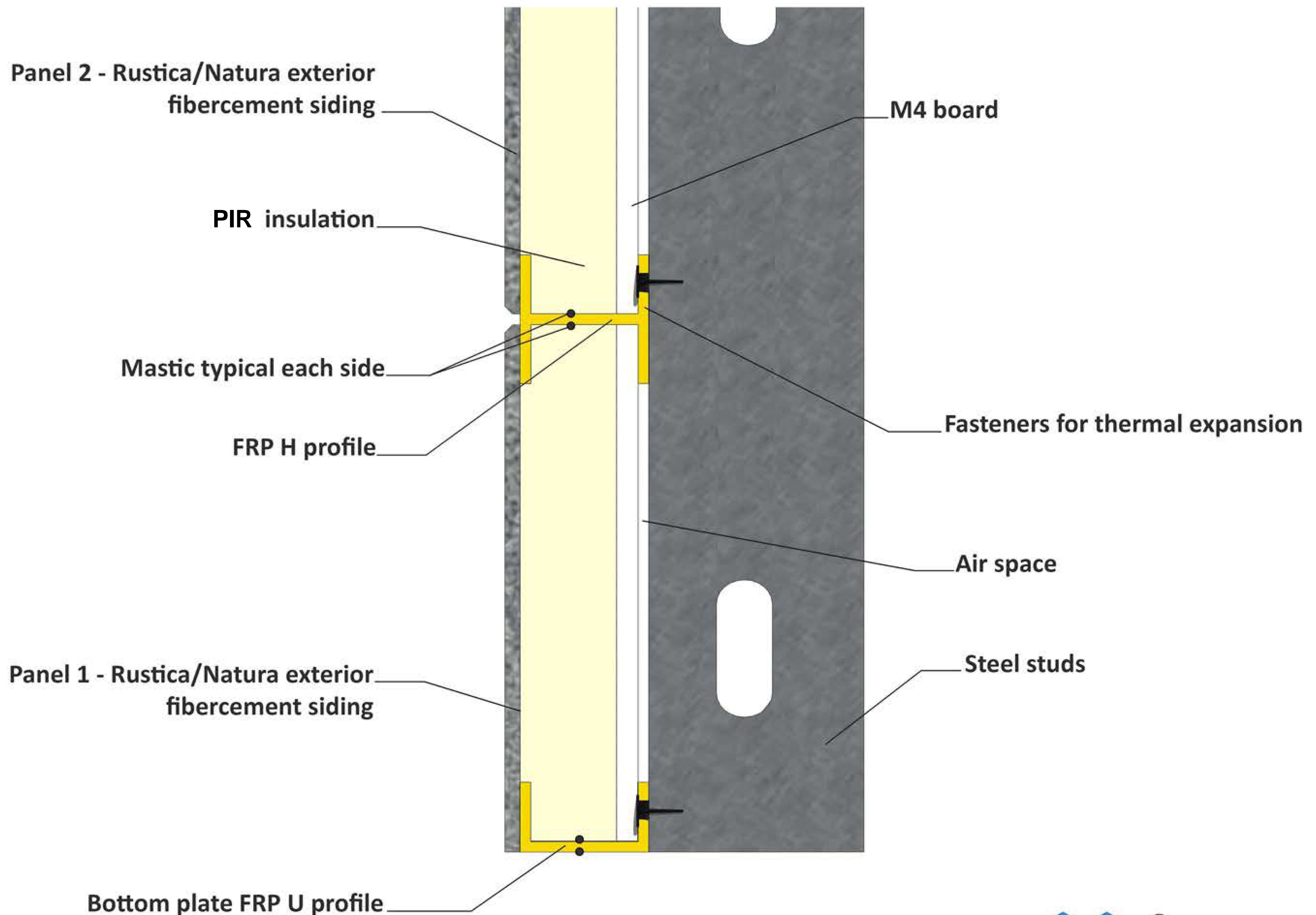
Rustica/Natura exterior
fibercement siding

PIR insulation

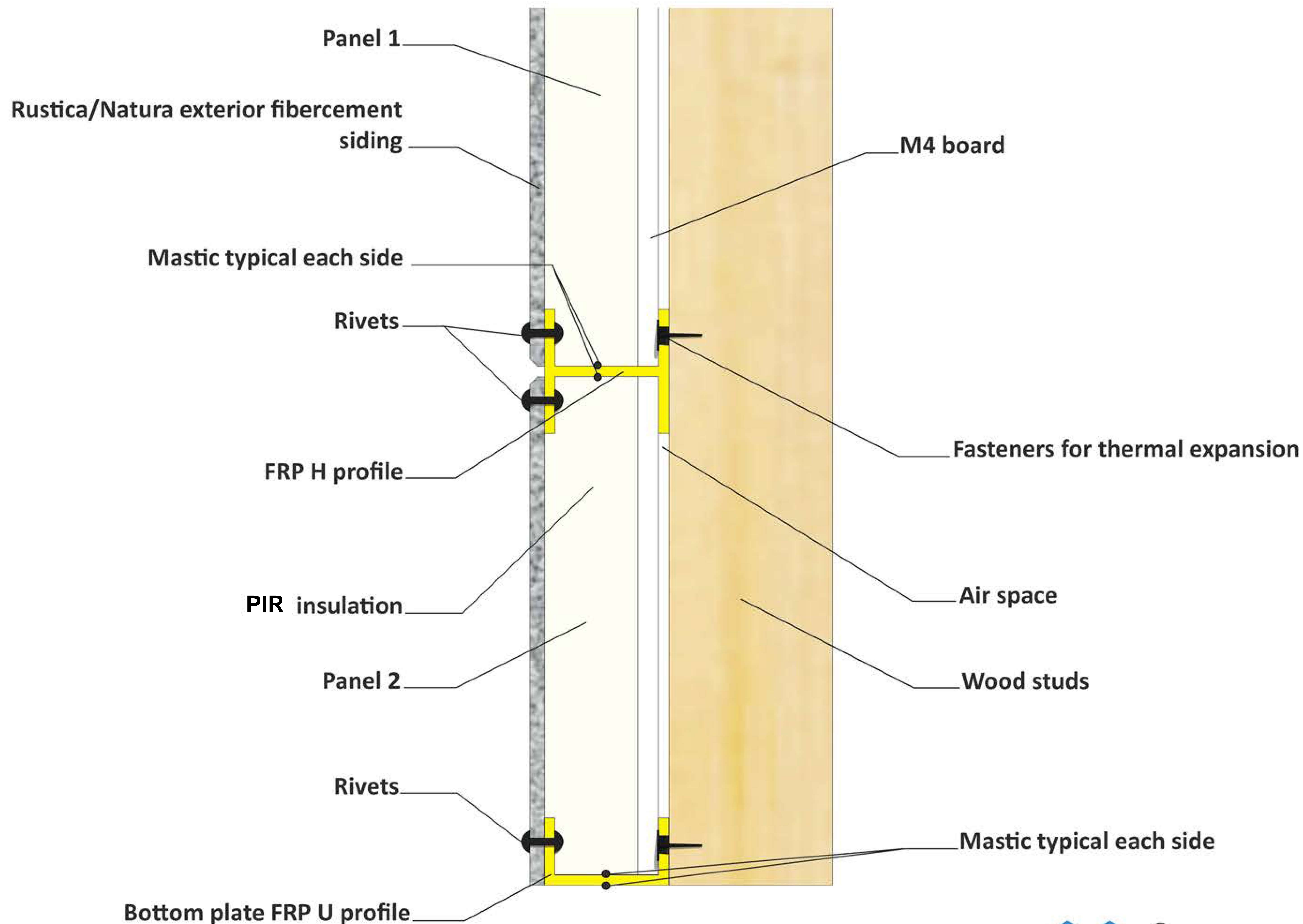
FRP H profile

Bottom plate FRP U profile

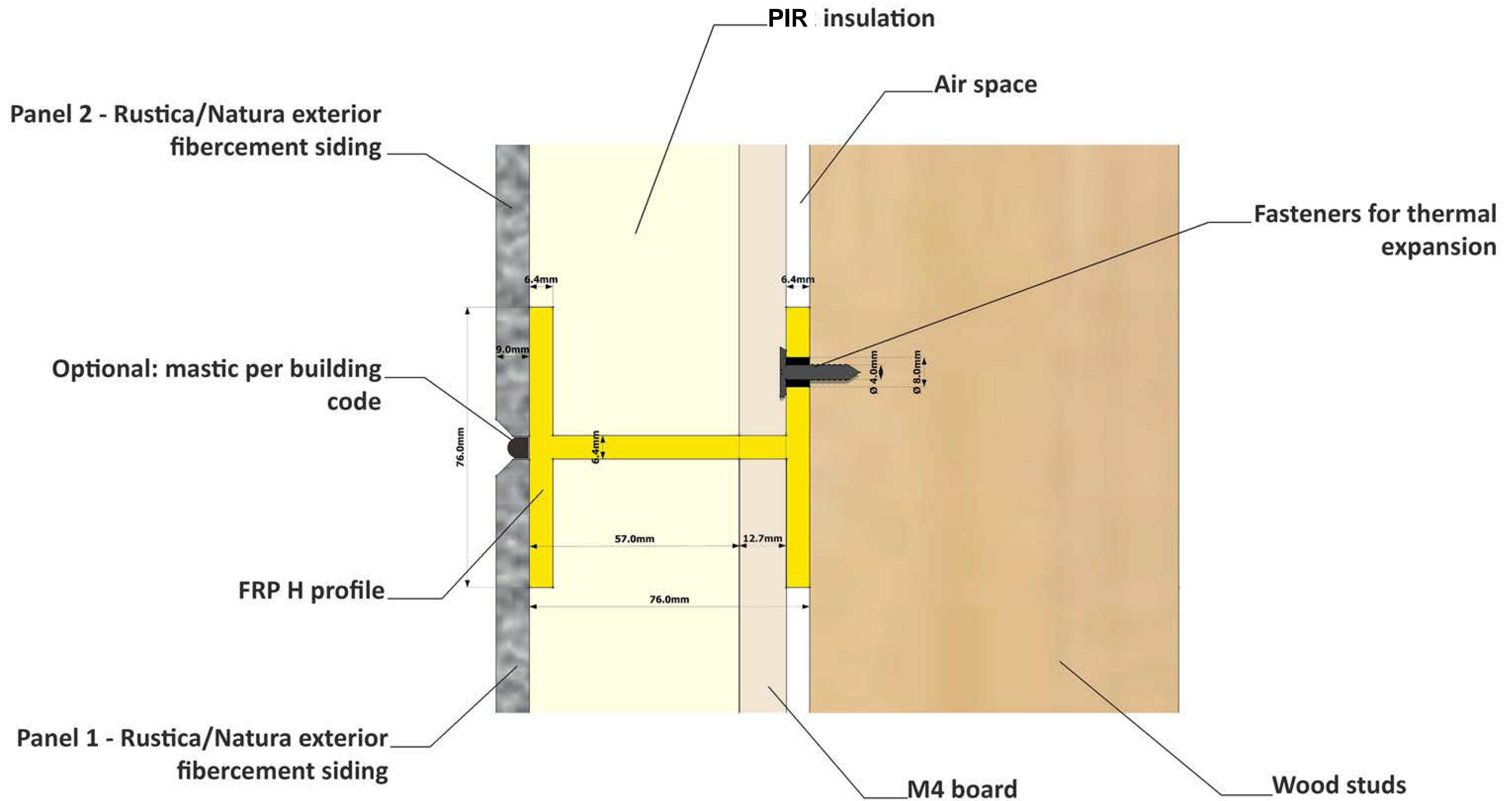
DETAIL EP 001



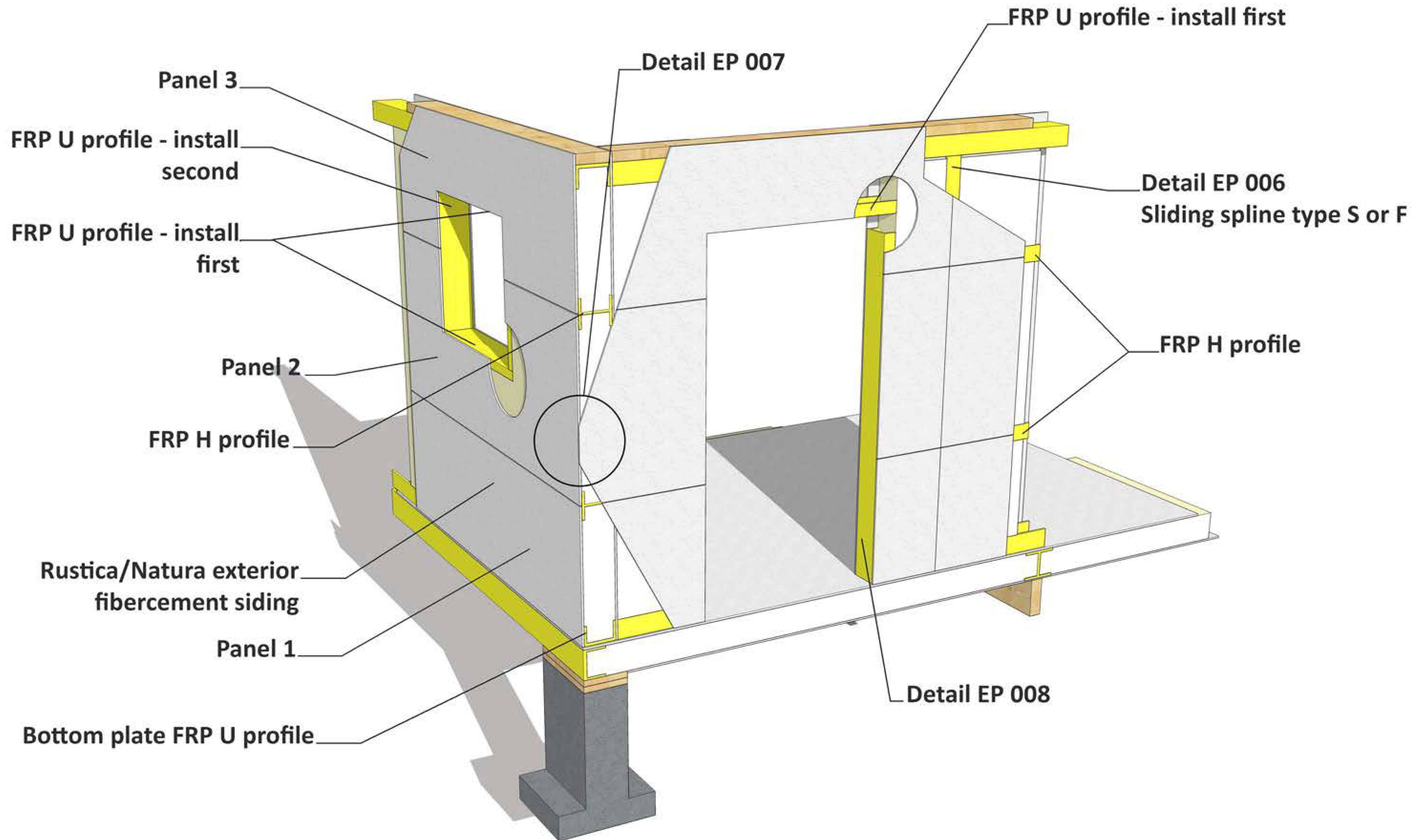
STEEL STUDS DETAIL EP 002



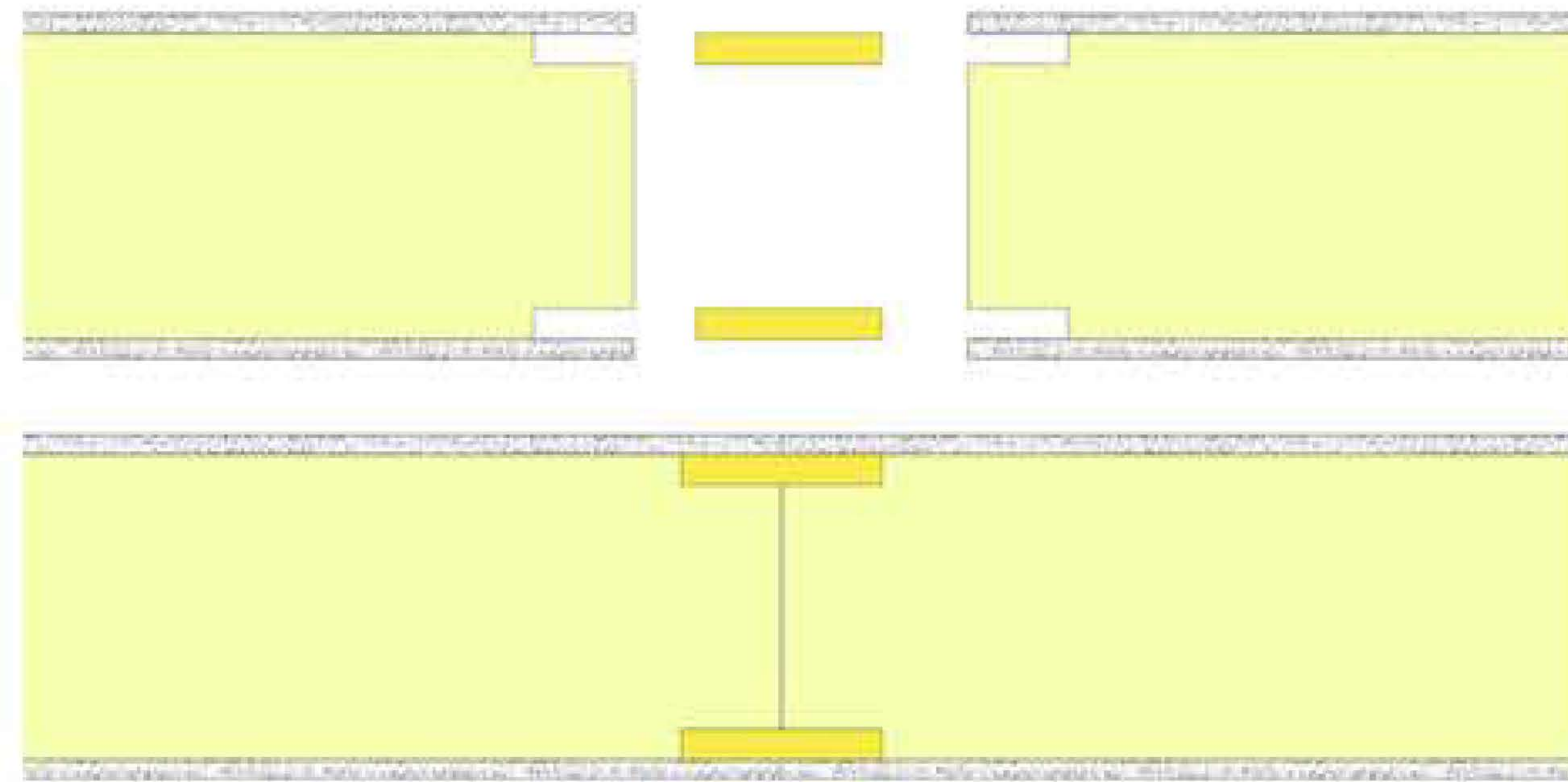
WOOD STUDS AND RIVETS DETAIL EP 003



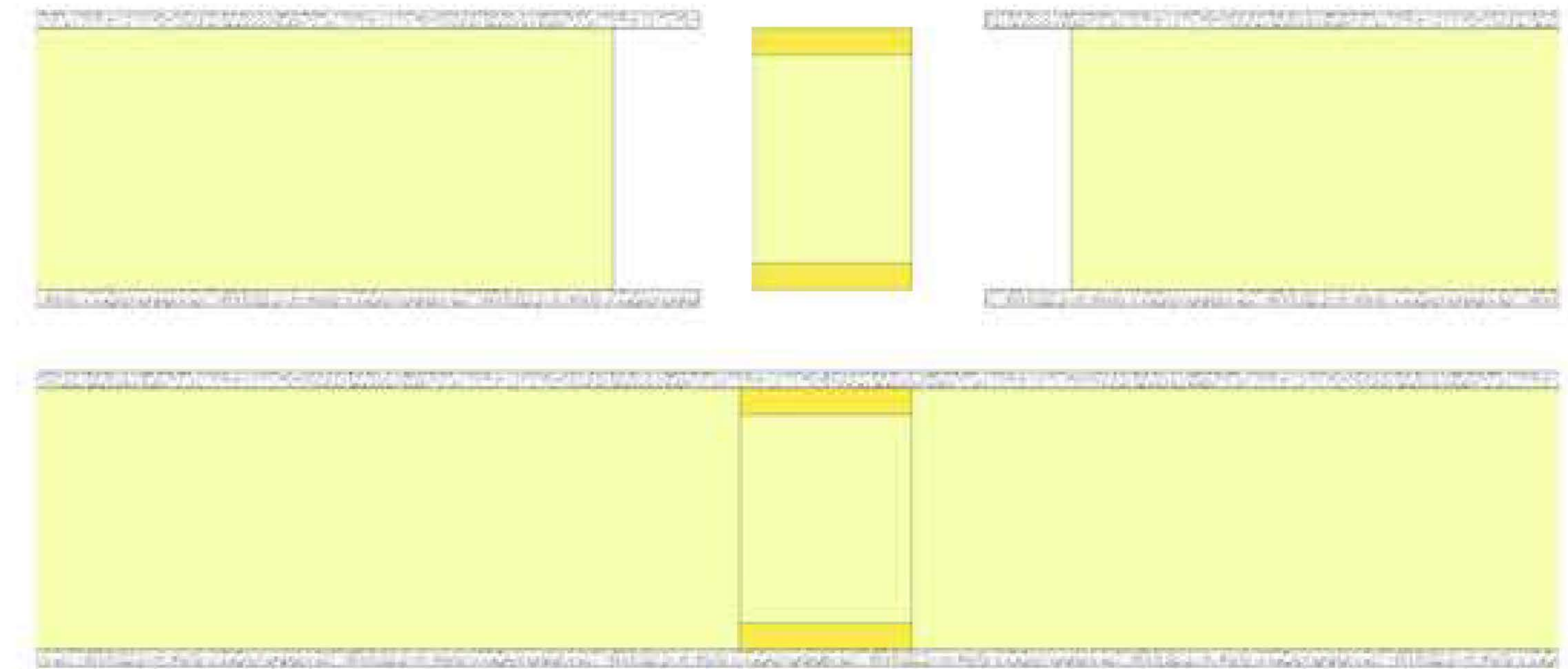
DETAIL EP 004



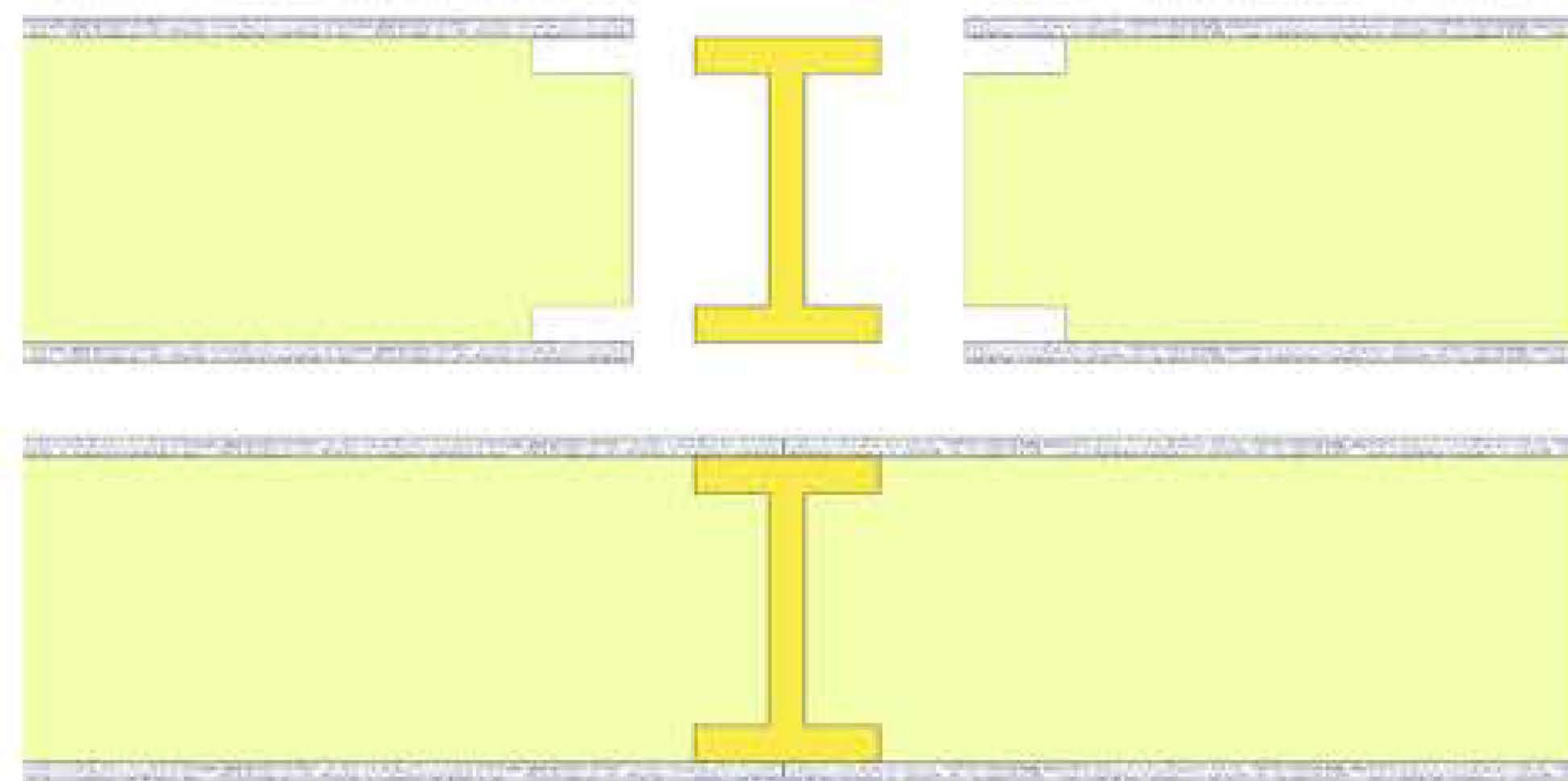
TYPICAL PANEL WALL DETAIL EP 005



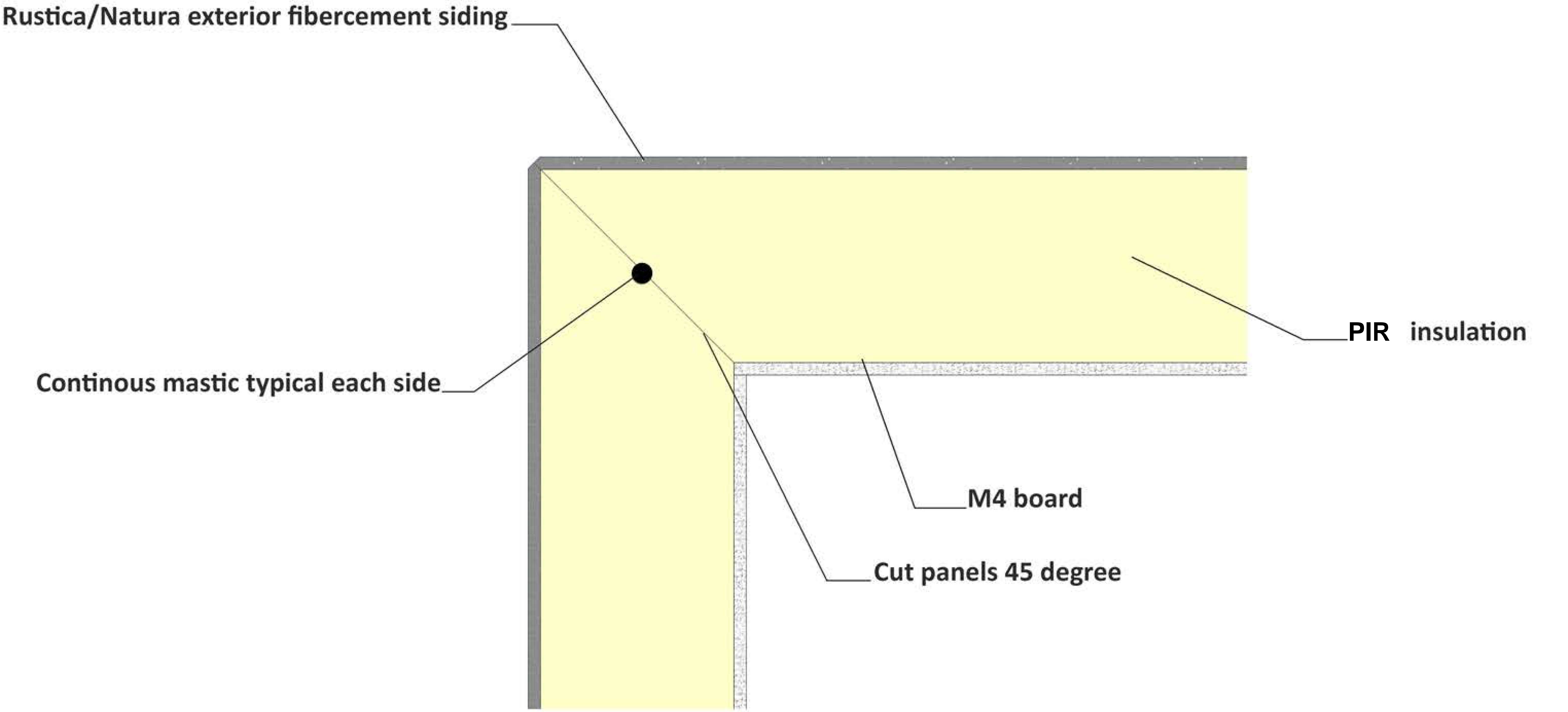
Surface spline (Type S)



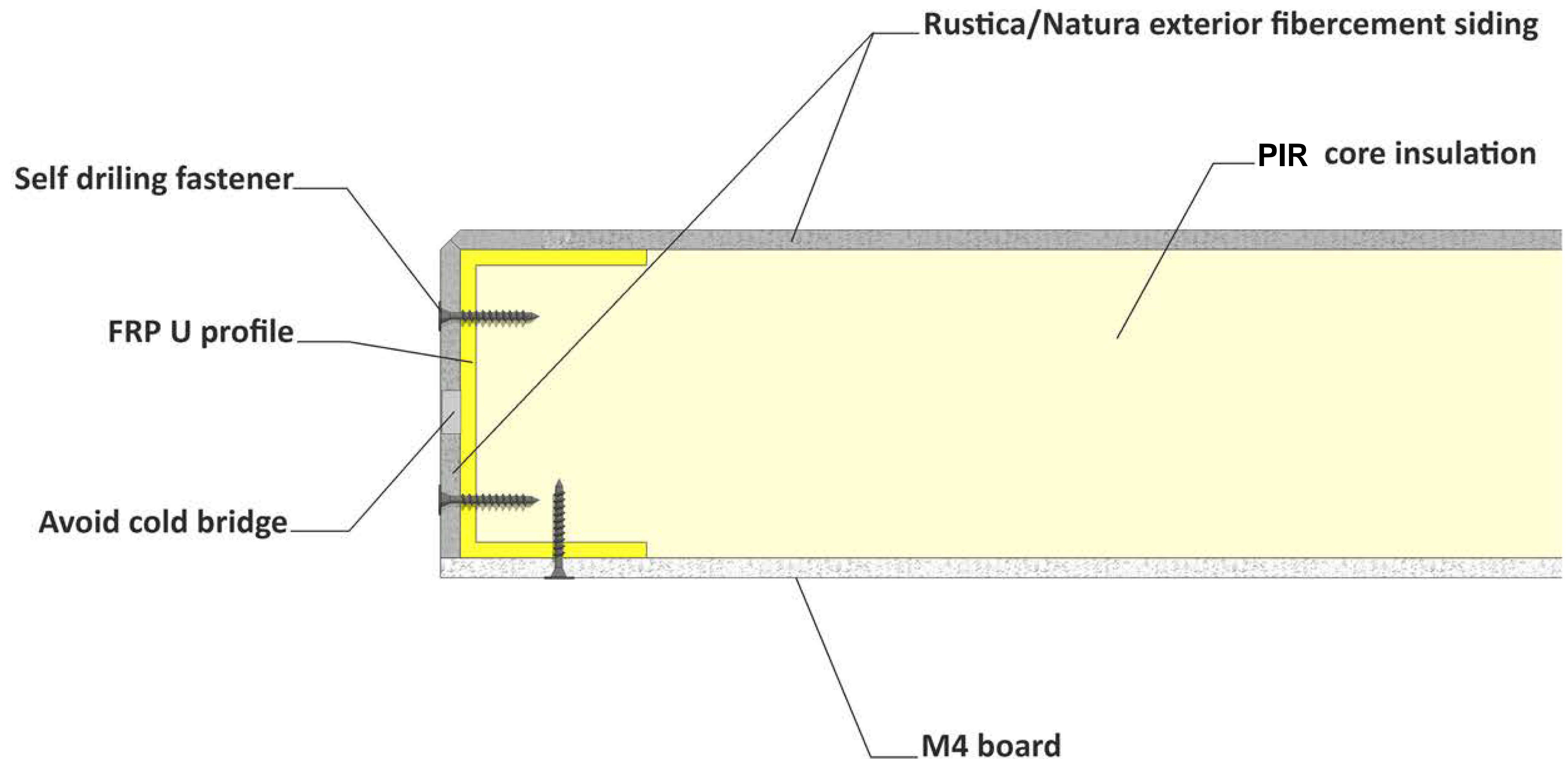
Block spline (Type S)



FRP spline (Type F)



CORNER SECTION DETAIL EP 007



WINDOW/DOOR VERTICAL/HORIZONTAL FRP PROFILE DETAIL EP 008